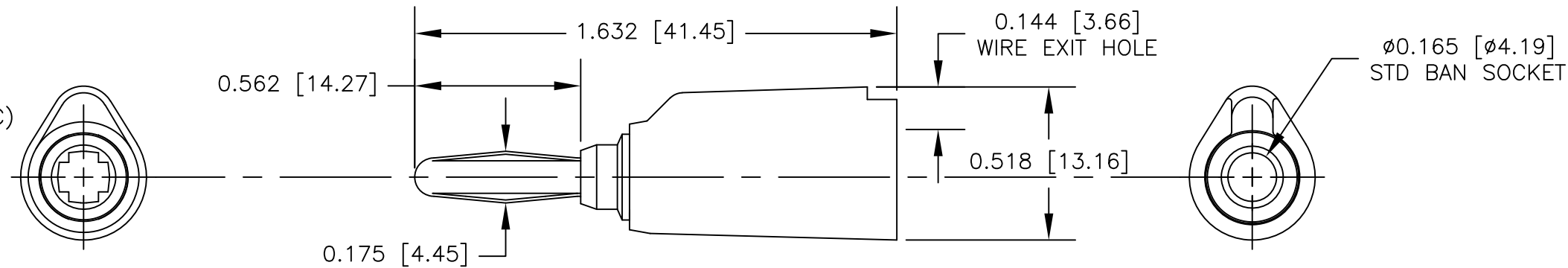


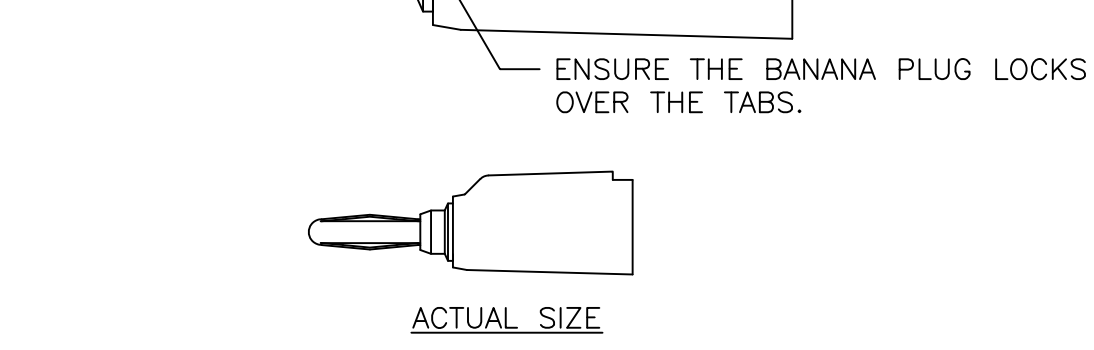
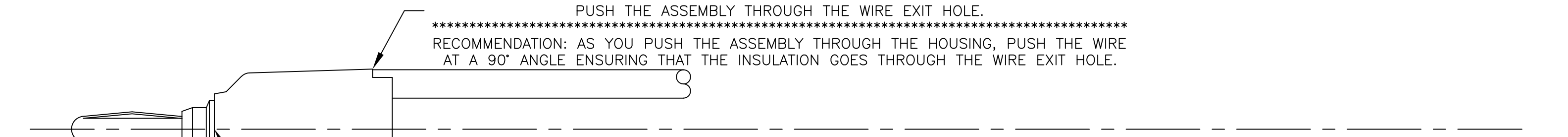
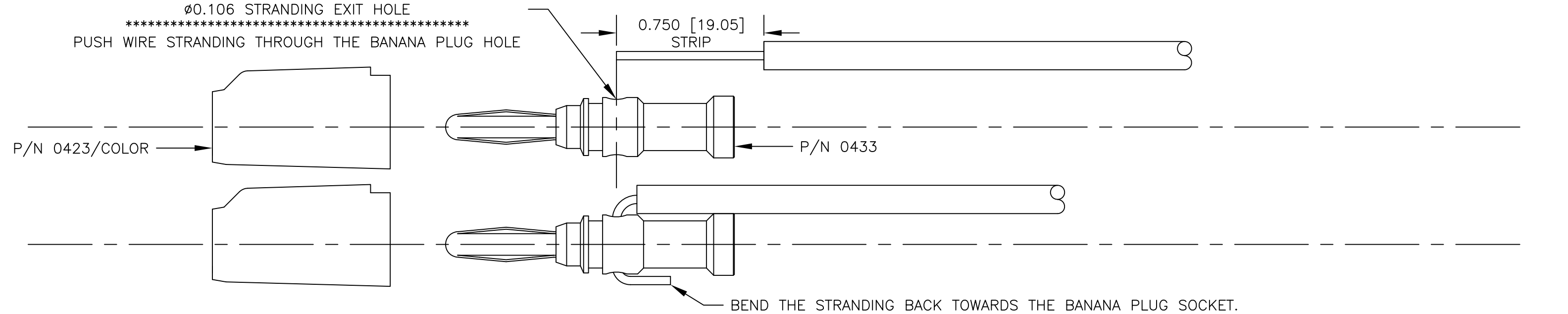
NOTES: UNLESS OTHERWISE SPECIFIED

- CONSTRUCTION:
HOUSING: MOLDED NYLON AVAILABLE IN ALL TEN COLORS
FRAME: NICKEL PLATED BRASS.
CONTACT: NICKEL PLATED BeCu OR PHOSPHOR BRONZE.
- PERFORMANCE:
MAXIMUM CURRENT: 15 AMPS
MAXIMUM VOLTAGE: 3500 VRMS
MAXIMUM TEMPERATURE: 200°F (93°C)

LTR	REVISIONS		DATE	APPROVED
	DESCRIPTION			



ASSEMBLY INSTRUCTIONS



		UNLESS OTHERWISE SPECIFIED DIMENSIONS ARE IN INCHES TOLERANCES ARE: FRACTIONS DECIMALS ANGLES ± N/A .XX ± N/A ± N/A .XXX ± N/A	CONTRACT NO.		E-Z-HOOK DIVISION OF TEKTEST INC. ARCADIA, CA 91006 U.S.A.
			APPROVALS	DATE	
		MATERIAL SEE NOTE	DRAWN R.L.	4/17	DESCRIPTION STACKING BANANA PLUG
		FINISH SEE NOTE	APPROVED BY		SIZE CODE IDENT NO. DRAWING NO. REV.
NEXT ASSY	USED ON				B 08505 9260
APPLICATION		DO NOT SCALE DRAWING			SCALE 2:1 SHEET 1 OF 1