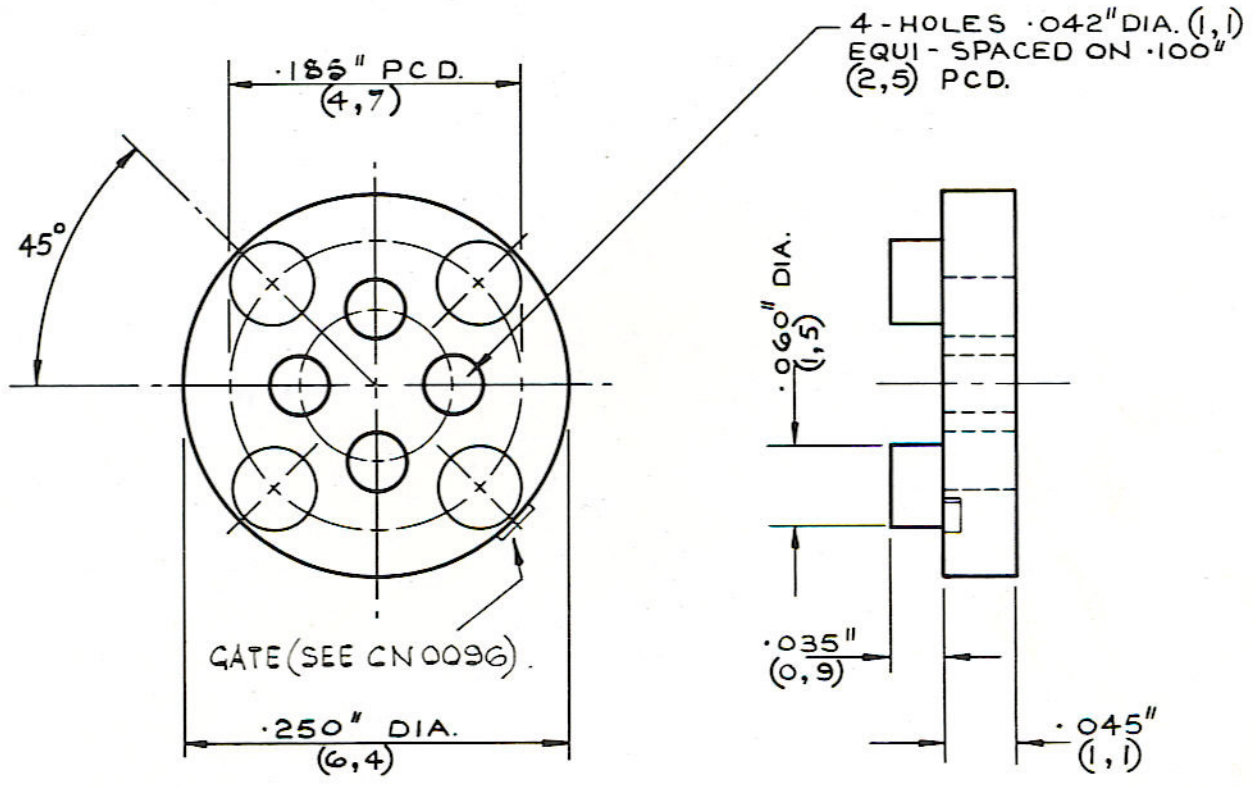


DRG. No.  
A 18-1013.

FOR EXPLANATION OF DIMENSIONING, ETC. SEE B.S.308  
REMOVE ALL BURRS & SHARP EDGES.  
A RADIUS OR CHAMFER .02 (MAX.) IS PERMITTED IN CORNERS  
OF BLIND HOLES, RECESSES & STEPS.

THIRD ANGLE PROJECTION



5.1.79	G	CN No 0096.	RN.	Type No	Rat No	Material.
14.3.79	F	Drwg No was A1181 Rat Pt No added.	EM.	T018-013D.	J18-1013D.	A1406.
<b>DATE</b>	<b>CHANGES</b>					
14-6-71	B	RE-DRAWN METRIC & TOLS. ADDED.	TOLERANCE ±.005" (0,13).		DRAWN	B. LANE.
19.10.72	C	TOLERANCE WAS ±.010" (0,25).	MATERIAL		TRACED	
7.12.72	D	PCD. OF FEET WAS .190" (4,8).			CHECKED	
14-1-77	E	MATERIAL AMENDED.			DATE	14-6-71
<b>TITLE TRANSISTOR MOUNTING PAD</b>			SCALE: 8:1		DRG. No.	
			DIMS. INCHES. (m.m)		A 18-1013.	

**JERMYN INDUSTRIES** VESTRY ESTATE, OTFORD, NR. SEVENOAKS, KENT.

CAF.L.3567/85

A SIZE.