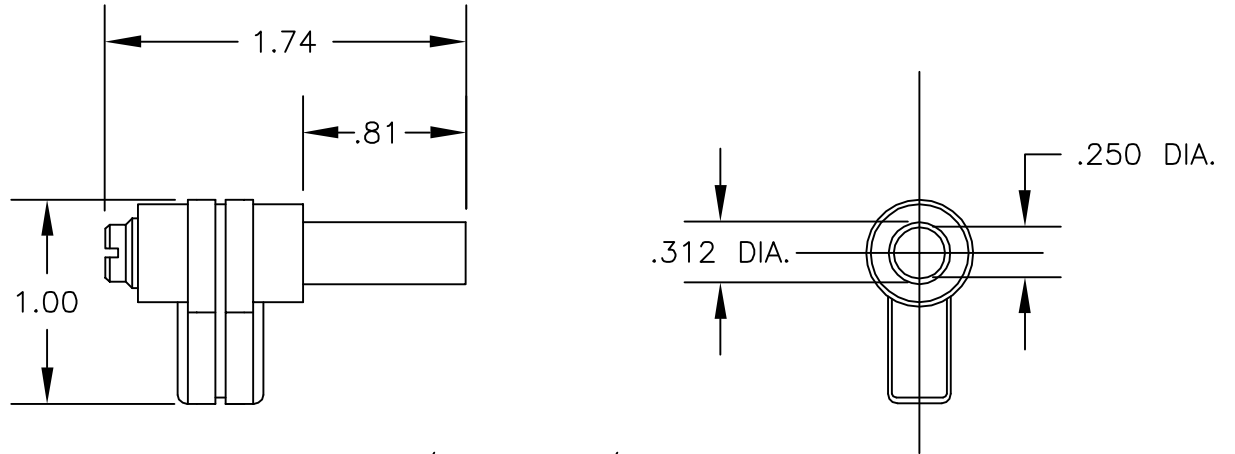


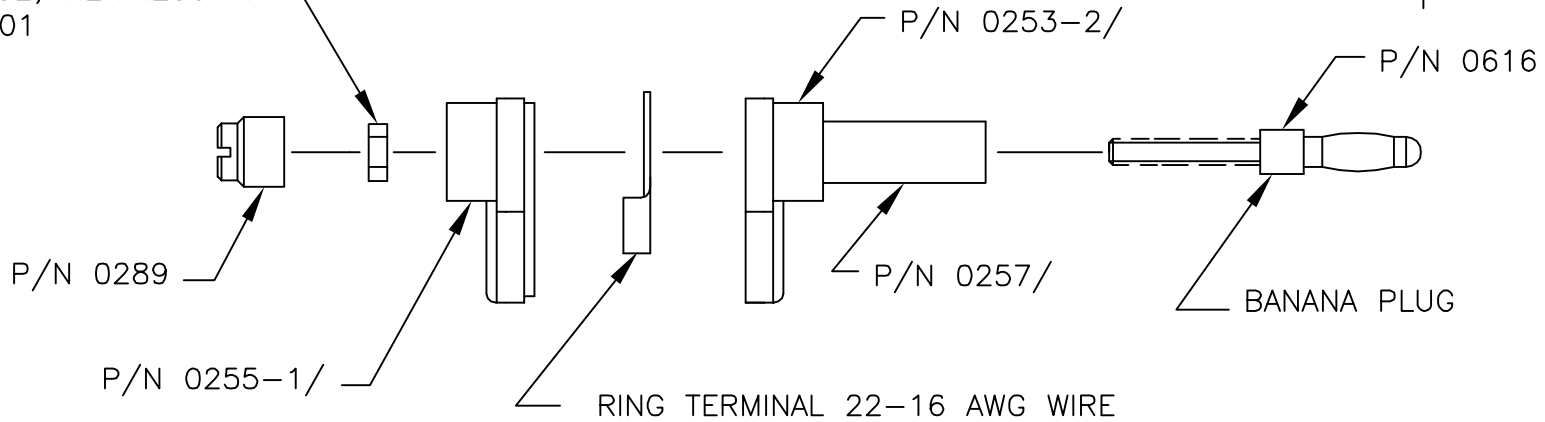
NOTE UNLESS OTHERWISE SPECIFIED.

- 1 MATERIAL:
BANANA PLUG BODY BRASS
SPRING CONTACT PHOSPHOR
BRONZE
HOUSING MOLDED NYLON.
- 2 FINISH:
BANANA PLUG NICKEL PLATED.
HOUSING RED OR BLACK.
- 3 ELECTRICAL:
MAX. CURRENT 15 AMPS.

REVISIONS			
LTR	DESCRIPTION	DATE	APPROVED



NUT 6-32, HEX .250 AF
P/N 0301



		UNLESS OTHERWISE SPECIFIED DIMENSIONS ARE IN INCHES TOLERANCES ARE: FRACTIONS DECIMALS ANGLES	CONTRACT NO.		E-Z-HOOK ARCADIA, CALIF 91006 SHROUDED RIGHT ANGLE STD. BANANA PLUG		
			APPROVALS	DATE			
			DRAWN S.B.W.	5/89			
		MATERIAL SEE NOTE	CHECKED		SIZE	CODE IDENT NO.	DRAWING NO.
					A	08505	9302
NEXT ASSY	USED ON	FINISH SEE NOTE			SCALE	FULL	SHEET 1 OF 2
APPLICATION		DO NOT SCALE DRAWING					